



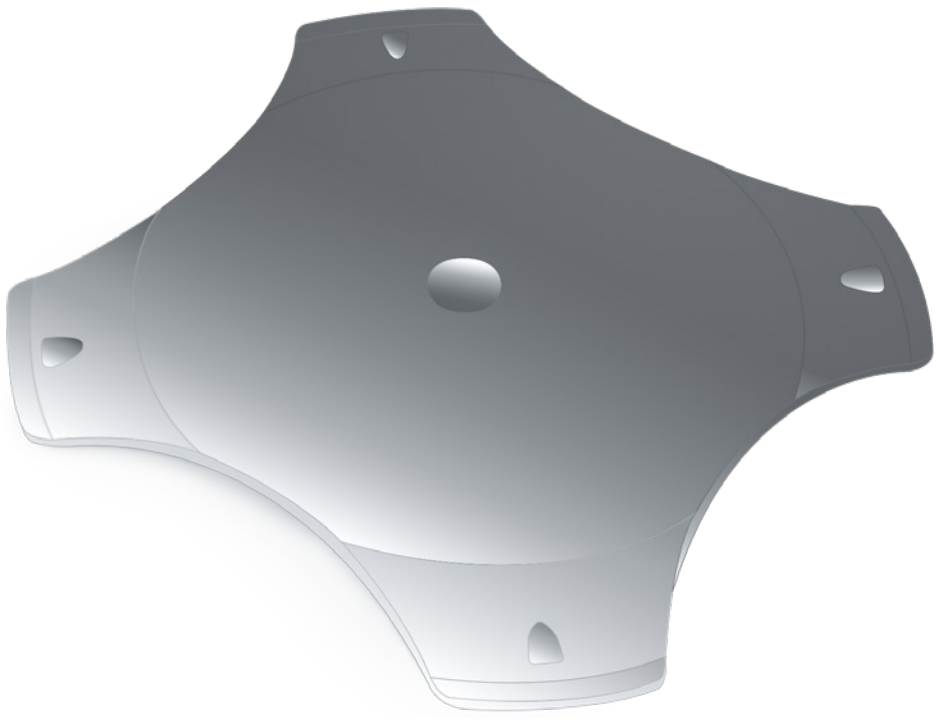
DOMES **SWITCH'AIR™**

NON-STICK

TECHNOLOGY

*SUPERIOR QUALITY
AND DURABILITY*

GREAT TACTILE FEEL



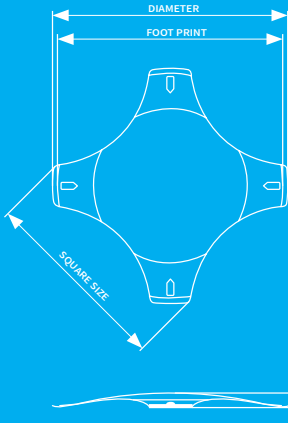
MAN MACHINE
INTERFACE

6-8.4-10-12.2
MM

WHY CHOOSE NICOMATIC DOMES

- EXCLUSIVE SWITCH'AIR™ TECHNOLOGY
- LIFE EXPECTANCY, 1 MILLION CYCLES GUARANTEED
- SHORTEST LEAD TIMES IN THE INDUSTRY
- DIVERSE PACKAGING OPTIONS
- 2D AVAILABLE ON THE WEBSITE
- EASY CUSTOM ON REQUEST

TECHNICAL FEATURES



QUALIFICATION TESTS
According to ASTM F2592-16

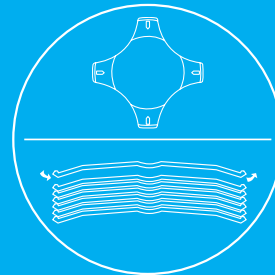
STAINLESS STEEL

TEMPERATURE
Storage: -55°C/+125°C
Operating: -40°C/+105°C

ELECTRICAL FEATURES
Switching voltage:
0.1 to 100 VDC
Switching current:
5µA to 100mA DC
Switching capacity 1W

CONTACT RESISTANCE
< 100 mOhm

RoHS Compliant



SWITCH'AIR™ TECHNOLOGY

Ease automatic assembly by eliminating the suction effect thanks to an exclusive non stick switch'air technology

TYPES

TRIP FORCE | (±30gr)

6MM 4L no SWITCH'AIR™	170 · 220	
DIMPLE	Available • Only	
REBOUND FORCE (±30gr)	70 • 90	
HEIGHT (mm)	0.35 ± 0.08	
TOTAL TRAVEL WITHOUT DIMPLE (mm)	0.28 • —	
TOTAL TRAVEL WITH DIMPLE (mm)	0.265	
FOOT PRINT (mm)	5.40	
SQUARE SIZE (mm)	4.80	
CLICK RATIO (%)	40 - 70 • 50 - 80	

TRIP FORCE | (±30gr)

8.4MM 4L	220 · 280 · 340 · 400		
DIMPLE	Available		
REBOUND FORCE (±30gr)	90 • 130 • 150		
HEIGHT (mm)	0.45 • 0.50 • 0.55		
TOTAL TRAVEL WITHOUT DIMPLE (mm)	0.37 • 0.42 • 0.45		
TOTAL TRAVEL WITH DIMPLE (mm)	0.33 • 0.38 • 0.43		
FOOT PRINT (mm)	8.00		
SQUARE SIZE (mm)	7.00		
CLICK RATIO (%)	40 - 70 • 50 - 80		

TRIP FORCE | (±30gr)

10MM 4L	220 · 280 · 340 · 400			
DIMPLE	Available			
REBOUND FORCE (±30gr)	90 • 100			
HEIGHT (mm)	0.65 • 0.70			
TOTAL TRAVEL WITHOUT DIMPLE (mm)	0.55 • 0.60			
TOTAL TRAVEL WITH DIMPLE (mm)	0.50 • 0.55			
FOOT PRINT (mm)	9.50			
SQUARE SIZE (mm)	8.40			
CLICK RATIO (%)	40 - 70 • 50 - 80 • 60 - 80 • 60 - 85			

TRIP FORCE | (±30gr)

12.2MM 4L	220 · 280 · 340 · 420			
DIMPLE	Available			
REBOUND FORCE (±30gr)	85 • 90 • 100 • 120			
HEIGHT (mm)	0.65 • 0.75 • 0.80			
TOTAL TRAVEL WITHOUT DIMPLE (mm)	0.55 • 0.65 • 0.70			
TOTAL TRAVEL WITH DIMPLE (mm)	0.48 • 0.58 • 0.63			
FOOT PRINT (mm)	11.7			
SQUARE SIZE (mm)	9.90			
CLICK RATIO (%)	40 - 70 • 50 - 80			



WEBSITE
nicomatic.com